

FOIL DRIVE

THE DRIVE TO GET YOU FLYING



Image: Shannon Stent

2024 PRODUCT CATALOGUE

INFORMATION AS OF NOVEMBER 2023 - SEE FOILDRIVE.COM FOR PRICING AND ORDERING

V3



LEAPING INTO THE NEXT GENERATION.

Three years of design, testing and development has brought us here, to the original hybrid dream; **ride any board, any foil, any way you like.** With the experience and community backing we have grown and developed over the last few years, Foil Drive as a brand and a product is coming of age, and ready to enhance the foiling experience forever.

OUR FAMILY.

Proudly South Australian, our ever-growing team is driven by founders Paul and Ben. Celebrating three years of operation late 2023, we've gained global recognition and a dedicated following of Foil Driver's worldwide. We have also expanded our support further by opening a European HQ.

OUR COMMUNITY.

The Foil Drive family extends to our Foilriding community. **We are incredibly proud of the community we have established**, one that is incredibly supportive of each other and one that has become a valuable group for insights and feedback. We're here for foilers, and the conversations we have with our community pave the way for development and improvements across the board.

CATALOGUE CONTENT.

This catalogue is here to help you understand the full Foil Drive range. Dive into the range of Gen1 and Gen2 kits, their accessories and everything else you need for your Foilriding journey. This catalogue will define compatibility and provide suggestions based on our extensive testing and community feedback.

Please keep in mind, our suggestions are a guide only. Many variables like rider weight, gear selection and use case all play a part in choosing the perfect Foil Drive for you!



THE FOIL DRIVE DREAM.

The dream has always been to **enhance the pure feeling of foiling while making the sport more accessible, enjoyable and fun.**

In this catalogue we present our comprehensive product lineup, showcasing the Gen1 and Gen2 Foil Assist series side by side. While our Gen1 Assist and Assist PLUS continue to be essential choices for many foilers, our Gen2 products represent the next level of innovation.

Gen1 Assist and Assist PLUS: These tried-and-true products have been at the heart of the foiling community, providing a lightweight propulsion system that retrofits seamlessly onto your existing foil board, elevating your foiling experience.

Gen2 Assist Slim and Assist MAX: The latest additions to our lineup, the Assist Slim and Assist MAX, embody the future of foiling. With improvements in every aspect, they deliver an unmatched foiling experience, promising enhanced fit, finish, design, performance, compatibility, runtime, durability, and cutting-edge features.

Whether you're a seasoned foiler looking to upgrade to the latest and greatest or a newcomer eager to embark on your foiling journey, our 2024 product catalogue has something for everyone.

It's a comprehensive guide that allows you to explore our entire range, compare features, and choose the perfect foil assist system for your foiling adventures.



Image: Shannon Stent

CONTENTS

1	FOIL DRIVE KITS
6	BATTERIES
14	MOTOR SYSTEMS
24	ACCESSORIES
38	REPAIRS
44	STORAGE
46	MERCHANDISE
48	FOIL DRIVE GEN2 APP
50	PRODUCT LIST



GEN1



GEN2

FOIL DRIVE KITS

If you're new to Foil Drive, it's important to know the differences between the two generations.

Gen1 is our original product that has been available from day one. Mounted to the top of the board, the **Assist PLUS** is perfect for the entry level Foildriver and is a great way to step into the sport.

Gen2 takes everything Foildrivers have come to love and has been enhanced dramatically. Everything from the fit and finish, to the capabilities and features, Gen2 is an all rounder. Mounted between the board and the mast, the **Assist MAX and Assist Slim** diversify the range and are a step up in the world of hybrid foiling.

FOIL DRIVE ASSIST MAX GEN 2



The **Assist MAX** is exactly that, an all rounder with maximum power, runtime, thrust and versatility. This is the largest Foil Drive suitable for any rider at any skill level!

- *Max Thrust: 27.5kg (60.6lbs)
- *Weight Range: 3.4 - 4.5kg (7.4 - 9.9lbs)
- Max Dimensions: L525 x W125 x H50mm
- Min Dimensions: L415 x W125 x H50mm

* Dimension/weight variations based on different batteries. Max Thrust based on Three Blade Propeller, data will vary based on real world, rider variables (Full real world thrust analysis available online).

FOIL DRIVE ASSIST SLIM GEN 2



The **Assist Slim** is smaller and lighter with a shorter run time, designed for performance foiling. It offers enough power for assisted foiling, while remaining super compact!

- *Max Thrust: 25.5kg (56.2lbs)
- *Weight Range: 2.3 - 2.8kg (5.0 - 6.1lbs)
- Max Dimensions: L510 x W125 x H35mm
- Min Dimensions: L415 x W125 x H35mm

FOIL DRIVE PLUS ASSIST

GEN 1



The original retro-fit kit with everything you need for assisted foiling, mounted to the top side of your board. A great entry level kit, the **Assist PLUS** is a great step into hybrid foiling.

- *Max Thrust: 25kg (55.1lbs)
- *Weight Range: 2.6 - 3.7kg (5.7 - 8.1lbs)
- Dimensions: L270 x W115 x H70mm

ASSIST

While the **Assist** system is no longer in production, we continue to supply spare parts, batteries and accessories for our Assist riders.





Image: Shannon Stent

BATTERIES

Each of our Assist Kits are compatible with their own Foil Drive batteries that offer different benefits for different use cases, runtime, power, weight and compatibility are all key variables.

The Lithium-Ion Battery Cells used in the Foil Drive systems feature the highest energy density available while maximising the power output, run time and performance of the system. This means we really are packing as much as we can into such a small space!

We highly recommend reading our information about Battery Care & Storage available on our online Help Centre.

There are 8 Foil Drive batteries across the range:

- Assist - Standard Battery
- Assist PLUS - Standard Battery
- Assist PLUS - Medium Battery (No longer in production)
- Assist PLUS - Small Battery

- Assist Slim - Performance Battery
- Assist Slim - Endurance Battery (N/A until 2024)
- Assist MAX - Sport Battery (N/A until 2024)
- Assist MAX - Power Battery



FAQ

Are batteries cross-compatible?

Foil Drive batteries are NOT cross compatible across units ie. An Assist battery cannot be used in an Assist PLUS.

What is the lifespan of a battery?

All batteries have a useful lifespan and are consumables. Due to battery chemistry, every time a battery is used it will slowly degrade and the loss of full power output and capacity will eventually become noticable. Depending on how often it is used, 1-2 years of good performance is typical when cared for correctly. More information can be found on our Help Centre.

Are they waterproof?

Foil Drive Batteries are not waterproof and should be treated with care, especially around salt water. While we do improve waterproofing, these remain water resistance. Please contact Foil Drive if your battery is ever exposed to water.

Gen1 Batteries have been designed to limit water ingress if they do become exposed to water however are more susceptible to damage.

Gen2 Batteries are custom made with massive advancement in durability and safety. They have been IP68 certified for dust and water resistance.

How much runtime?

Battery runtime is a very hard number to give a single answer to. Foiling is an incredibly dynamic and complex sport, making it impossible to have fixed values. While we do provide average runtime, we believe in honest, real world examples. Available online is an extensive look into each battery, comparing rider weight, gear and more in order to give you the best idea of how much you can get out of each battery depending on your specific use case.

Can you fly with them?

Airlines have very strict restrictions with Batteries where they must fall under 160Wh. The following pages have an airline icon next to the compatible batteries and we do have plans to expand this range in the future. Please contact your airline before travelling as all airlines have varying rules.



Assist PLUS Standard 12.6ah Battery: Designed for all disciplines, this is the largest, most popular Assist PLUS battery.

Capacity: 12.6Ah	Appx. Charge Time: 3 Hours	Compatibility: Assist PLUS
Volts: 28V	Weight: 1.7kg (3.7lbs)	SKU: 002
Energy: 362.8Wh	Install Weight: 3.7kg (8.1lbs)	



Assist PLUS Small 4.2ah Battery: For the weight conscious rider, these are perfect for wingers, pump practice or those not needing the full runtime. These are also airline friendly!

Capacity: 4.2Ah	Appx. Charge Time: 1 Hours	Compatibility: Assist PLUS
Volts: 28V	Weight: 0.6kg (1.3lbs)	SKU: 003
Energy: 120.9Wh	Install Weight: 2.6kg (5.7lbs)	



Assist PLUS Airline Travel Bundle: The Small Batteries are compliant with most airline requirements, making them a game changer for travellers. A Parallel Y Lead connects 2x Small Batteries together creating the capacity of an 8.4ah battery (2/3's a Standard Battery or a Medium Battery).

Included:	Note: Small Batteries cannot be used for flatwater Foilriding even when connected together.	Compatibility: Assist PLUS
- 2x Small Batteries		SKU: 004
- 1x Parallel Y Lead		
- 1x Battery Checker		

Kit Install Weight: 3.3kg (7.25lbs)



Assist Standard 12ah Battery: Designed for all disciplines, this is the largest, most popular Assist PLUS battery. The Assist system cannot be used for Flatwater Foilriding.

Capacity: 12Ah	Appx. Charge Time: 3 Hours	Compatibility: Assist
Volts: 22V	Weight: 1.7kg (3.7lbs)	SKU: 006
Energy: 259Wh	Install Weight: 3kg (6.6lbs)	

GEN1

GEN1

GEN1

GEN1





SKU: 104

Assist Slim Endurance Battery: The larger Slim battery, great for longer runtimes. However, with a lower voltage, it doesn't not provide the same level of thrust as the Slim Performance Battery.

Capacity: 8.4Ah
Volts: 28V
Energy: 241.92Wh
Compatibility: Assist Slim
Appx. Standard Charger Time: 2 Hrs
Weight: 1.4kg (3lbs)
Install Weight: 2.3kg (5.0lbs)
Battery Dimensions: 410x75x21mm

GEN2



SKU: 105

Assist Slim Performance Battery: The smaller Slim battery, great for those who're wanting a punchy, high performing, light-weight ride at the cost of less runtime than the Endurance.

Capacity: 4.2Ah
Volts: 40V
Energy: 166.32Wh
Compatibility: Assist Slim
Appx. Standard Charger Time: 1 Hr
Weight: 1kg (2.2lbs)
Install Weight: 2.8kg (6.1lbs)
Battery Dimensions: 320x75x21mm

GEN2



SKU: 102

Assist MAX Sport Battery: The smaller, lighter MAX battery, offering a reduce weight for those riders looking for ultimate performance at the cost of reduced runtime.

Capacity: 8.4Ah
Volts: 40V
Energy: 332.64Wh
Compatibility: Assist MAX
Appx. Fast Charger Time: 1.5 Hrs
Appx. Standrd Charger Time: 2.5 Hrs
Weight: 1.8kg (3.9lbs)
Install Weight: 3.4kg (7.4lbs)
Battery Dimensions: 290x75x40m

GEN2



SKU: 101

Assist MAX Power Battery: The largest MAX battery offering the longest run time with high power performance.

Capacity: 12.6Ah
Volts: 40V
Energy: 498.96Wh
Compatibility: Assist MAX
Appx. Fast Charger Time: 2 Hrs
Appx. Standrd Charger Time: 3.5 Hrs
Weight: 2.6kg (5.7lbs)
Install Weight: 4.5kg (9.9lbs)
Battery Dimensions:420x75x40mm

GEN2

SKU: 105



SKU: 106



SKU: 104



SKU: 103



FOIL DRIVE CHARGERS

There are three chargers available for the Gen2 range, two standard chargers and one fast charger, and two chargers for the Gen1 range. Each charger has specific compatability and must be used with the correct battery. The best way to cross check is to compare the Voltage printed on the battery, matches that on the charger.

40V Standard Charger 4Ah Slim Performance, MAX Sport, MAX Power
40V Fast Charger 8Ah Slim Performance, MAX Sport, MAX Power
28V Standard Charger 4Ah Slim Endurance, Assist PLUS Standard, Assist PLUS Small
22V Standard Charger 4Ah Assist Standard

NOSE CONES

All Gen2 batteries have a specific letter printed on them, this is to help identify the corresponding nose cone to use when closing up your unit. Eg. The Assist MAX Sport Battery has a B printed on it, this must be used with Nose Cone B.

The nose cone makes up the housing of the elctronics box, encapsulating the battery inside when installed. It is imperative the correct nose cone is used by simply matching up the letters.



GEN2 FOIL DRIVE BATTERIES ARE IP68 RATED MAKING THEM DUST AND WATER RESISTANT.



Image: Shannon Stent

SKU: 106



MOTOR SYSTEMS

The introduction of Gen2 Foil Drive has also seen an increase in options when it comes to Motor Systems. Different cable lengths are crucial as they allow the rider to place the motor in varying positions on the mast.

Gen1 Foil Drive systems feature an inbuilt, fixed motor cable with 200cm length. This gives ample length to run the motor at any height on the mast with versatile box mounting options. Excess cable can be coiled up and tied off when nowt in use.

Gen2 utilises the same robust motor, propellers and mast adaptor as Gen1 with changes to the system modularity. A custom water resistant motor plug seamlessly connects the electronics box to the motor allowing rider to interchange between a range of different cable lengths. By simply removing 3 bolts and plugging in a new motor, the rider can now have a quiver of motors for different foiling disciplines or preferences.

Integrated Masts have become highly desired within the Foil Drive community as they reduce drag and install time while maintaining a sleek look. With more brands on the horizon, we currently offer both Gen1 and Gen2 systems integrated into the Project Cedrus Aluminium Mast or the AXIS 19mm Aluminium Mast.

GEN2 MOTOR SYSTEMS

Gen2 Motor Systems are available in 5 different lengths that are interchangeable. The length being the distance between the base plate and the motor position on your mast. These lengths are shorter than Gen1 as the cable does not need to wrap around to the top side of the board. Each position has been curated for specific use:



15CM / 5.9IN

We often refer to this position as *slammed* as it's as close to the board as possible without noticing interference due to its proximity to the board. The ideal for those wanting assistance to get on foil, and have their motor exit as soon as they're on foil.

Surf - Wing - Pump - Wake



20CM / 7.8IN

A step down from the slammed position, this is most common for most riders wanting assisted power in most disciplines. The motor remains in the water a little longer meaning you can really rely on it to get you up and running.

Surf - Wing - Downwind - Pump - Wake



25CM / 9.8IN

Wanting to flatwater Foildrive back to the lineup? Learning to surf, downwind or wing? The mid mast position gives you enough depth to motor around but remains high enough to pop the motor out of the water once you're up on foil and feeling ready to glide naturally.

Surf - Wake - Flatwater - Learn



60 & 70CM
23.6 & 27.5IN

Positions close to the fuselage are ideal for flatwater Foildriving and learning. A 60cm and 70cm Motor are available with the same use case. The 60cm Motor is suitable for masts up to 60cm long, whereas the 70cm Motor is for masts longer than 70cm.

Flatwater - Learn



READ MORE
ABOUT MOTOR
LENGTHS



Image: Shannon Stent

Top Tip Some tapered masts require a secondary Mast Adaptor that fits closer to the fuselage for Flatwater Foildriving. If a flatwater version is not listed, please contact us!



SECTION A ALSO HAS SMALL VARIABLE
A: UNIVERSAL MOTOR POD - NOSE (LARGE)
B: UNIVERSAL MOTOR POD - REAR
C: MAST ADAPTOR- NOSE
D: MAST ADAPTOR - REAR
 MAST ADAPTORS ARE SPECIFIC TO EACH MAST AND ARE INTERCHANGABLE.

SKU: 095

Universal Motor Pod The Universal Motor Pod is an important part of the Foil Drive setup. It must be used with the custom Mast Adaptors that are specific to each exact foil mast.

These outer sleeves are universal and can easily adapt from mast to mast by simply interchanging the internal Mast Adaptor pieces.

The combination of the Universal Motor Pod and the Mast Adaptor is a V2 refinement of the original one piece motor pods that we started with. These outer sections are super strong injection molded poly-carbonate fiberglass reinforced.

1x Large Pod Nose, 1 x Small Pod Nose,
 1x Common Rear Section, 4x Bolts (M3x12mm)

SKU: 007 (FOLLOWED BY ADAPTOR NUMBER)

Mast Adaptors These adaptors are inetgral in our custom fit motor pod system that allows riders to use any mast and are designed to fit inside the Universal Motor Pod. We have 100+ different mast adaptors that are custom made to fix to the mast while creating as little impact as possible to the hydrodynamics of these beautifully crafted masts.

The table on the right displays the adaptors we stock. If your mast isn't listed, **head to our website for the most up to date list by scanning the QR code,** or send us an email so we can craft a new adaptor.

1x or 2x Inner Nose Pieces; 1x Inner Rear Piece



SHOP ADAPTORS

FOILDRIVE MAST COMPATIBILITY

V106A

AXIS	#1 AXIS ALLOY 19MM #35 AXIS POWER CARBON #36 AXIS CARBON #94 AXIS ALLOY 16MM #94 AXIS PRO - ULTRA HMC	120x19 133x18 128x16 124x18 121x16 XXXXXX
ARMSTRONG	#3 ARMSTRONG A+ - 72/85CM #53 ARMSTRONG A+ - EFOIL #70 ARMSTRONG PERF - EFOIL #71 ARMSTRONG PERF 795 #103 ARMSTRONG PERF 935 #104 ARMSTRONG PERF 865 #30 ARMSTRONG V1	126x17 107x15 115x14 137x17 139x17* 138x16* 126x17
AK DURABLE	#51 AK PLASMA CARBON #52 AK TREK ALLOY	122x14 124x15
AFS	#57 AFS PERFORMER	120x14
ALPINE	#106 ALPINE HM CARBON MODULAR	119x15
CABRINHA	#34 CABRINHA ALLOY #46 CABRINHA FUSION CARBON #47 CABRINHA FUSION CARBON - EFOIL	146x16 137x15 120x15
CLOUD 9	#7 CLOUD 9 CARBON 76CM #50 CLOUD 9 ALLOY #87 CLOUD 9 FS	128x19 133x16 130x19
CODE FOILS	#81 CODE FOILS #82 CODE FOILS - EFOIL	131x17 115x15
DAKINE	#95 DAKINE CHARGER	147x17
DELTA	#89 DELTA ALLOY	115x15
FANATIC	#14 FANATIC ALLOY OLD #39 FANATIC CARBON & ALLOY 2022 #69 FANATIC FLOW S1 2018 #85 FANATIC x DUOTONE COLLAB C-TE	135x18 114x16 96x15 125x17
F-ONE	#23 F-ONE ALLOY #56 F-ONE CARBON HIGH MODULE #96 F-ONE CARBON HM 14MM #97 F-ONE CARBON HM 16MM	117x14 139x18 120x14 120x16
FREEDOM FOILS	#61 FREEDOM FOILS CARBON 74 #98 FREEDOM FOILS CARBON EFOIL	132x18 115x15
F4	#67 F4 ALLOY	135x15

GONG	#41 GONG V2 ALLVATOR CARBON #32 GONG V2 ALLVATOR ALLOY #20 GONG ALLOY V1	150x18 130x17 110x15
GOFOIL	#2 GOFOIL CARBON #27 GOFOIL TUTTLE - OLD #76 GOFOIL V2 2023 CARBON	139x14 119x12 139x15
HYDROFOIL	#29 HYDROFOIL & LAHOMA	127x15
KONRAD	#11 KONRAD ALLOY #60 KONRAD FLYR CARBON	116x16 150x22
KENALU	#22 KENALU	113x14
LAHOMA	#29 LAHOMA & HYDROFOIL	127x15
LIFT	#19 LIFT CARBON #93 LIFT X2	117x16 127x17
LIQUID FORCE	#44 LIQUID FORCE ALLOY #45 LIQUID FORCE CARBON #80 LIQUID FORCE ALLOY 2020	110x16 116x16 132x14
LEVITAZ	#24 LEVITAZ HYBRID #25 LEVITAZ 75 #26 LEVITAZ 90 #100 LEVITAZ RS RACE SERIES	NA NA NA 124x16
MIKESLAB	#54 MIKESLAB #88 MIKESLAB 2023	141x16 120x12
MOSES	#10 MOSES #31 MOSES 90	120x17 143x15
MOTOFOIL	#73 MOTOFOIL 1850MM	129x15
NAISH	#58 NAISH S27 ALLOY #48 NAISH S27 JET CARBON #4 NAISH S26 CARBON #6 NAISH S25/S26 ALLOY #13 NAISH THRUST ALLOY	127x16 115x18 118x17 130x18 110x15
NEIL PRYDE	#43 NEIL PRYDE GLIDE WIND A 2021	149x17
NO LIMITZ	#28 NO LIMITZ #92 NO LIMITZ V2	117x16 124x16
NORTH	#72 NORTH SONAR CF85 #84 NORTH SONAR AF72/85	129x18 125x18

NSP	#66 NSP AIRWAVE ALLOY	135x15
OMEN	#86 OMEN - THE STIFFY	124x16
PROJECT CEDRUS	#17 PROJECT CEDRUS CARBON #59 PROJECT CEDRUS ALLOY	119x19 118x19
REEDIN	#35 REEDIN ALLOY #79 REEDIN ALLOY 2022	108x17 140x16
RRD	#40 RRD	135x16
SAB FOILS	#62 SAB KRAKEN CARBON 93/83 #63 SAB KRAKEN CARBON 93/83 EFOIL #64 SAB 82 CARBON OLD #65 SAB 92 CARBON OLD	127x19 111x15 125x19 146x17
SEVERNE	#49 SEVERNE	145x19
SIGNATURE	#16 SIGNATURE CARBON	115x14
SLINGSHOT	#8 SLINGSHOT ALLOY #42 SLINGSHOT PHANTASM 92 C #90 SLINGSHOT PHANTASM 72 C #91 SLINGSHOT PHANTASM 82 C	115x16 137x19 136x18 137x19
STARBOARD	#37 STARBOARD V8 ALLOY #74 STARBOARD MONOLYTHIC #83 STARBOARD ALLOY V5	113x19 153x12 118x15
STINGER	#99 STINGER ALLOY	118x15
TAKOON	#78 TAKOON ALLOY/CARBON	132x18
TAKUMA	#5 TAKUMA CARBON #18 TAKUMA KUJIRA ALLOY #15 TAKUMA ALLOY - OLD #75 TAKUMA 2023 C #77 TAKUMA HD ALLOY #101 TAKUMA CARBON V2 2023	120x15 115x15 110x15 126x17 120x18 138x16
UNIFOIL	#12 UNIFOIL ALLOY 2020 #33 UNIFOIL CARBON 2022 #68 UNIFOIL KATANA S5 CARBON #102 UNIFOIL PROGRESSION 800 #105 UNIFOIL ALLOY 2023	115x15 125x15 150x19 143x19 124x18
ZEEKO	#21 ZEEKO	115x15

* NOTES TAPERED MASTS WHERE ADAPTOR IS DESIGNED TO FIT 20-25CM BELOW MOUNTING PLATE

PROJECT CEDRUS INTEGRATED MAST

Project Cedrus is a brand based in California, offering hand crafted, super stiff foil masts. The design features custom, integrchangeable fuselage adaptors that allow the rider to us a range of different brands of foils with their mast. This collaboration ties in with the Foil Drive vision, allowing riders to use a range of different gear with their setup.

You'll find a range of adaptors available from Foil Drive, with other adaptors available direct from Project Cedrus. Simply select your motor height, Foil Drive kit and your adaptor to experience a streamline installation, and drag free riding! Depending on your mast, you'll either require a mast adaptor or a full fuselage adaptor.

While motor positions are fixed and cannot be changed once installed, the Project Cedrus x Foil Drive Mast Integration is perfect for riders who know exactly where they want their motor, and never want to move it!

Top Tip All Foil Drive Systems; Assist PLUS, Assist MAX and Assist Slim, can be Integrated into one of our options at an extra cost.

Mast Integrations offer streamline installation and significantly reduced drag!

Mast Adaptors stocked by Foil Drive:

- SKU 082-1 Axis
- SKU 082-2 F-One
- SKU 082-3 Lift
- SKU 082-4 Unifoil
- SKU 082-5 Takuma 3 Bolt M6
- SKU 085-6 Cabrinha
- SKU 085-7 SAB Kraken
- SKU 085-8 Code Foils

Fuselage Adaptors stocked by Foil Drive:

- SKU 082-9 Armstrong 60cm
- SKU 082-10 GoFoil V2

Mast Specs:

Material: 19mm Anodised Aluminium
Length: 80cm

CEDRUS



AXIS INTEGRATED MAST

One of the leading foil brands in the World, AXIS Foils is based in New Zealand and California and offers an extensive range of foiling gear for all abilities and disciplines. The AXIS x Foil Drive collaboration features the 19mm Aluminium Mast, one that has been the most popular amongst the Foil Drive community for some time.

This collaboration is for the AXIS rider who wants to embrace their Foil Drive, while preserving the streamline, highly responsive design of the AXIS masts. Designed for the entire foil line, the AXIS masts are stiff, strong, and ready for any use and conditions.

While motor positions are fixed and cannot be changed once installed, the Axis x Foil Drive Mast Integration is perfect for riders who know exactly where they want their motor, and never want to move it!



AXIS



Mast Specs:

Material: 19mm Anodised Aluminium
Length: 82cm

*Please specify if you require a Doodad and Bolts

GEN1 MOTOR SYSTEMS

Gen1 Motor Systems are available with a fixed cable length of 200cm (78.7 inches). The length being the distance between the Electronics Box and the motor. Gen1 Motor Systems cannot be modified or detached as the cable is hardwired into the Electronics Box and the Motor.

Excess cable can always be coiled up at the electronics box when not in use

Note: Prior to the launch of the Gen2 Motor System in 2023, customers had the opportunity to order varying cable lengths. We have now removed this option as 200cm has become a universal length for all use cases.

Top Tip Unless using an Integrated Mast, Mast Cables Guides must be used as they heavily reduce drag, improving performance. Be sure to tape your cable on with minimal lumps and bumps, and all the way down to the motor for best results!

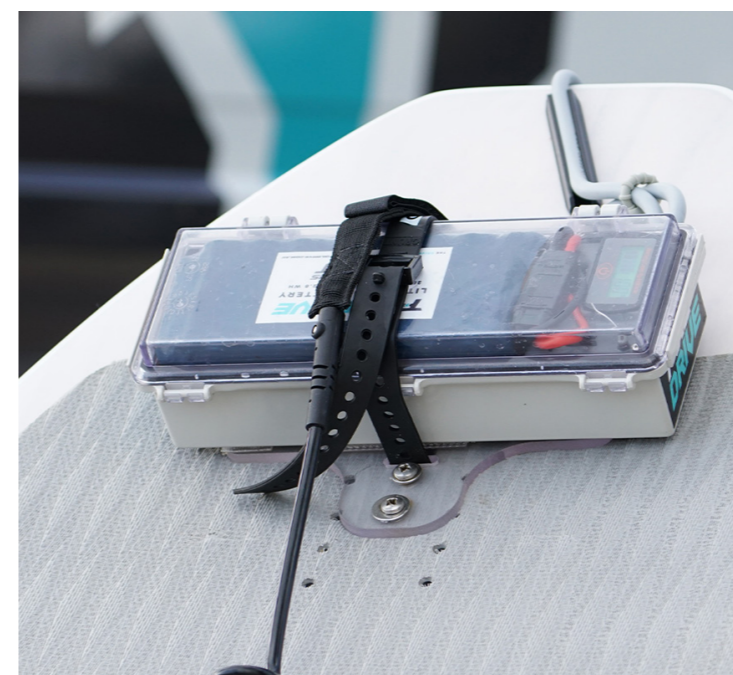


Image: Shannon Stent

ACCESSORIES

While every Foil Drive comes with everything you need to get started, we offer a range of different accessories that allow you to customise your rider and make small changes to better suit your specific needs.

From mounting hardware to custom brand collaborations, we've got it all. Can't find what you're looking for? Try the Repairs section.

Pictured

Foil Drive Locking Tee Nuts
Three Blade Propeller Hub
Foil Drive Universal Motor Pod & Adaptor
Kāohi x Foil Drive Wrist Leash



Image: Shannon Stent



Image: Shannon Stent

SKU: 027

ASSIST
ASSIST PLUS
ASSIST MAX
ASSIST SLIM



Mounting Base Plate: 1x Polycarbonate Plate, 4x 3M Dual Lock, 1x Rubber Strap

Using two foot strap screws, secure the plate to your board then attach your box to the plate, a front and rear slot in the plate allow a strap to further secure the box. Foot strap screws not provided as lengths vary.

SKU: 028

ASSIST
ASSIST PLUS
ASSIST MAX
ASSIST SLIM



Low Profile Anchor Points: 12x Anchor Points, Rubber Strap, 4x 3M Dual Lock

Low Profile Anchor Points are the perfect addition to your kit to ensure it remains in place! Stick these directly to your board and use the provided strap to secure your kit.

SKU: 079

ASSIST
ASSIST PLUS
ASSIST MAX
ASSIST SLIM



Rubber Strap and 3M Dual Lock: 1x Strap, 4x Pieces (2 Pairs) 3M Dual Lock

Rubber Strap and 3M Dual Lock for your Mounting Base Plate or Low Profile Anchor Points. All Low Profile Anchor Points and Mounting Base Plates come with these items supplied.

SKU: 018

ASSIST
ASSIST PLUS
ASSIST MAX
ASSIST SLIM

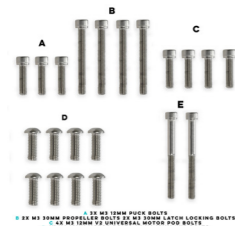


3M Dual Lock: 4x Strips 3M Dual Lock (2 Pairs)

3M Dual Lock Strips secure the Gen1 Foil Drive Box to your board or the Mounting Base Plate.

SKU: 116-03

ASSIST
ASSIST PLUS
ASSIST MAX
ASSIST SLIM



Stainless Steel Bolt Kit Gen 1: 3x Puck Bolts - M3 12mm, 4x V2 Universal Motor Pod Bolts - M3 12mm, 2x Propeller Bolts - M3 30mm, 2x Latch Locking Bolts - M3 30mm, 4x Motor Bolts - M4 10mm, 4x Hub Bolts - M4 10mm, 2x Paddle Mount Bolts - M3 35mm

Stainless Steel 316 Bolts for Gen1 Foil Drives, this kit includes every bolt you could ever need.

SKU: 148

ASSIST
ASSIST PLUS
ASSIST MAX
ASSIST SLIM



Integrated Mast Mounting Bolts: 2x M8 16mm Bolts, 3x M4 10mm Bolts

These are the bolts required for securing your integrated mast to your Gen2 Foil Drive for easy assembly and transport using carbon boards.

SKU: 115

ASSIST
ASSIST PLUS
ASSIST MAX
ASSIST SLIM



Nose Cone Rocker Foam Pad: 2x D Shape Adhesive Foam Pads

This is a replacement Nose Cone Rocker Foam Pad. It's designed to provide cushioning between the Foil Drive Nose Cone and board where a gap may be present.

SKU: 142 143

ASSIST
ASSIST PLUS
ASSIST MAX
ASSIST SLIM



Locking T Nuts: FS KU: 142 4x M6 Locking T Nuts SKU: 143 4x M8 Locking T Nuts

Foil Drive Locking T Nuts are made from 316 Stainless Steel and are available in M6 and M8. Included with all Gen2 Systems, these T Nuts slide into your mast tracks and are able to lock in place once you know exactly where you need them. This makes installation 10x faster and ensures your gear stays exactly where you want it, every time.

SKU: 116-X

ASSIST
ASSIST PLUS
ASSIST MAX
ASSIST SLIM

Bolt Hardware Set Gen2: F SKU: 116-01 Assist MAX Kit SKU: 116-02 Assist Slim Kit

Entire Bolt Hardware Set for Gen2 Series Foil Drive.

SKU: 117-X

ASSIST
ASSIST PLUS
ASSIST MAX
ASSIST SLIM



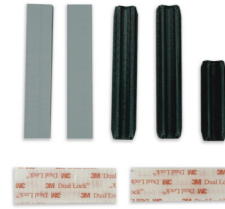
Mast Plate Bolts & Locking T Nuts: 4x T40 Bolts, 4x Locking T Nuts, 4x M3 x 20mm Bolts (Varying bolt dimensions specific to each system noted below).

SKU: 117-01 M8 80mm Assist MAX SKU: 117-02 M6 80mm Assist MAX
SKU: 117-03 M8 60mm Assist Slim SKU: 117-04 M6 60mm Assist Slim

Securely attach your Foil Drive Unit to your mast with these Mast Plate Bolts + Locking T Nuts. Reliable and easy to install, these bolts and nuts lock your system into place.

SKU: 020

ASSIST
ASSIST PLUS
ASSIST MAX
ASSIST SLIM



Board Cable Guides: 2x Long Board Cable Guides, 1x Short Board Cable Guide

Board Cable Guides adhere to your board and hold the cable in place. If you have a longer cable length additional Board Cable Guides may be required to secure the whole length of your cable onto your board.

SKU: 019

ASSIST
ASSIST PLUS
ASSIST MAX
ASSIST SLIM



Mast Cable Guides: 2x Mast Cable Guides

Additional or replacement Rubber Mast Cable Guides for securing your motor cable to the trailing edge of your mast. These are super important in order to maintain a streamline finish, longer masts may require additional guides.

SKU: 009

ASSIST
ASSIST PLUS
ASSIST MAX
ASSIST SLIM



Additional Board Instal Kit: 4x Pieces 3M Dual Lock, 2x Long Board Cable Guides, 1x Short Board Cable Guide, 2x Mast Cable Guides

Have multiple boards or need to freshen up your existing installation? The Additional Board Install Kit includes everything you need to attach your electronics box to your board, and correctly secure the cable to your mast.

SKU: 085

ASSIST
ASSIST PLUS
ASSIST MAX
ASSIST SLIM



Kāohi Leash x Foil Drive Wrist Leash: 1x Kāohi Leash x Foil Drive Wrist Leash

Combine the best of both worlds with the Kāohi Leash x Foil Drive Wrist Leash for Throttle Controller. Specifically designed for Foil Drive Controllers, the adjustable Kāohi Leash Cuff secures your controller to your wrist.

SKU: 140

ASSIST
ASSIST PLUS
ASSIST MAX
ASSIST SLIM



Foil Drive Controller Leash: 1x Foil Drive Controller Leash

Included with Foil Drive Kits, this leash is available to connect your controller to your wrist.

SKU: 008

ASSIST
ASSIST PLUS
ASSIST MAX
ASSIST SLIM

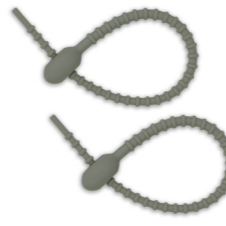


Paddle Mount: 1x Paddle Mount, 1x Reversible Wedge, 2x M4 10mm Bolts

Control your Foil Drive from your paddle with our ergonomically designed Paddle Mount. These mounts easily install to your paddle and can be altered for both goofy and natural footed riders, simply switch the position of the removable wedge.driver.

SKU: 025

ASSIST
ASSIST PLUS
ASSIST MAX
ASSIST SLIM



Re-Usable Rubber Tie: 2x Re-Usable Rubber Ties

Whilst designed to tidy your cable, or secure your controller to your paddle, these little re-usable ties are super handy! Every kit comes with a tie but we're sure you've got 1000 ideas on where else you can use them so grab yourself a two pack!

SKU: 082-X

ASSIST
ASSIST PLUS
ASSIST MAX
ASSIST SLIM



Project Cedrus Fuselage: 1x Project Cedrus Fuselage, 2x Bolts

Designed to adapt a range of different foils to the Project Cedrus Integrated Mast. Additional fuselage can be purchased direct from Project Cedrus, this is a whole fuselage, not just a mast adaptor. We generally have the more popular adaptors in stock eg. Armstrong 60cm, GoFoil V2

SKU: 082-X

ASSIST
ASSIST PLUS
ASSIST MAX
ASSIST SLIM



Project Cedrus Fuselage Adaptors: 1x Project Cedrus Fuselage Adaptor, 2x Bolts

Designed to adapt a range of different fuselages to the Project Cedrus Integrated Mast. Additional adaptors can be purchased direct from Project Cedrus. We generally have the more popular adaptors in stock eg. Axis, Lift, F-One, UniFoil, Code.

SKU: 109

ASSIST
ASSIST PLUS
ASSIST MAX
ASSIST SLIM



Axis Foils Doodad: 1x Axis Doodad and Hardware 19mm Alloy

Used to connect your 19mm Integrated Axis Mast to your Fuselage, AKA "Doodad". This does not come with Mounting Bolts.

SKU: 139

ASSIST
ASSIST PLUS
ASSIST MAX
ASSIST SLIM**Controller Wireless Charger Pad:** 1x Wireless Controller Charge Pad and USB Cable

Additional Wireless Charger Pad for Foil Drive Controllers

SKU: 068

ASSIST
ASSIST PLUS
ASSIST MAX
ASSIST SLIM**Controller Charge Cradle:** 1x Charger Cradle (Charging accessories not included)

Designed to perfectly fit your Foil Drive Controller and Charge Pad, the Charge Cradle can be mounted to a bench or wall, particularly useful if charging on the move!

SKU: 021

ASSIST
ASSIST PLUS
ASSIST MAX
ASSIST SLIM**Foil Drive Throttle Controller V2** 1x Wireless Throttle Controller, 1x Wrist Floaty, 1x Charge Pad and Cable, 1x Re-Usable Silicon Tie

The high powered V2 Controller makes using smaller boards even easier. With improved connectivity, these are compatible with all Foil Drives (Note: Foil Drive Assist cannot make use of the additional telemetry data readings of these controllers).

SKU: 016

ASSIST
ASSIST PLUS
ASSIST MAX
ASSIST SLIM**Durable Hub:** 1x Durable Propeller Hub, Install Hardware (Props not included).

The durable hub is for plastic Standard or Durable Propellers only. If you plan to foil in debris heavy waters, we recommend having a spare hub in your kit! This hub cannot be used with Aluminium Propellers.

SKU: 015

ASSIST
ASSIST PLUS
ASSIST MAX
ASSIST SLIM**Nylon Hub:** 1x Nylon Hub, Installation Hardware (Propellers not included).

Nylon Hub for Aluminium Propellers.

SKU: 011

ASSIST
ASSIST PLUS
ASSIST MAX
ASSIST SLIM**Aluminium Propeller Hub:** 2x Aluminium Propellers, 1x Nylon Hub, Mounting Hardware

Aluminium Propellers are the ultimate upgrade providing maximum performance, durability and style. These Anodised, 5 Axis CNC Machined blades have a refined shape, and are thinner, stronger and sleeker.

SKU: 087

ASSIST
ASSIST PLUS
ASSIST MAX
ASSIST SLIM**Three Blade Propeller Hub:** 1x Three Blade Hub, Installation Hardware (Propellers not included).

Replacement Three Blade Propeller Hub for Aluminium Propellers.

SKU: 088

ASSIST
ASSIST PLUS
ASSIST MAX
ASSIST SLIM**Three Blade Propeller Hub Set:** 3x Aluminium Propellers, 1x Three Blade Hub, Mounting Hardware

Designed to increase low end thrust, the Three Blade Propeller Hub is an optional upgrade for riders pushing the limits of rider weight, board size and foil size. It is not suitable for Flatwater Foilriding.

SKU: 089

ASSIST
ASSIST PLUS
ASSIST MAX
ASSIST SLIM**Three Blade Propeller Hub Upgrade:** 1x Aluminium Propellers, 1x Three Blade Hub, Mounting Hardware

An upgrade set for existing customers who wish to use their existing 2 blades on a Three Blade Hub. Note: This must be used with all three propellers.

SKU: 090

ASSIST
ASSIST PLUS
ASSIST MAX
ASSIST SLIM**Three Blade Propeller Hub and Rotor Bundle:** 3x Aluminium Propellers, 1x Three Blade Hub, 1x Protective Stubby Cooler, 1x Motor Can/Rotor

This bundle allows riders to have two rotor and propeller set ups to quickly interchange their set up from two to three propellers, ideal if you have multiple riders, or use cases!

SKU: 083

ASSIST
ASSIST PLUS
ASSIST MAX
ASSIST SLIM



Motor Pod Blank: 1x Motor Pod Blank, Bolts Not Included - To use your existing bolts
Pod blanks fit to the Motor Pod where the Motor would typically attach. These blanks are available for riders who don't remove their pod, creating a more hydrodynamic shape when not mounting the motor.

SKU: 012

ASSIST
ASSIST PLUS
ASSIST MAX
ASSIST SLIM



Aluminium Propellers: 2x Aluminium Propeller Blades
Aluminium Propellers are the ultimate upgrade providing maximum performance, durability and style. These Anodised, 5 Axis CNC Machined blades have a refined shape, and are thinner, stronger and sleeker.

SKU: 013

ASSIST
ASSIST PLUS
ASSIST MAX
ASSIST SLIM



Standard Propellers: 2x Standard Propellers
One pair of Standard Foil Drive Assist folding propellers. These propellers are the softest of them all, Durable or Aluminium Propellers may be better suited as a more durable option.

SKU: 014

ASSIST
ASSIST PLUS
ASSIST MAX
ASSIST SLIM



Durable Propellers: 2x Durable Propellers
One pair of Durable Foil Drive Assist folding propellers. These propellers are more durable than the Standard Propellers. Standard or Aluminium Propellers may be better suited.

SKU: 113

ASSIST
ASSIST PLUS
ASSIST MAX
ASSIST SLIM



Motor Plug Protector: 1x Motor Plug Protector and Keychain
This is a replacement Motor Plug Protector with Keychain for both Assist MAX and Assist Slim. This plug is important in keeping your electronics free of sand, debris and salt spray.

SKU: 114

ASSIST
ASSIST PLUS
ASSIST MAX
ASSIST SLIM



Mast Track Foam Inserts: 2x Pieces of Closed Cell Foam (300mm x 10mm x 28mm)
Additional Mast Track Foam Inserts are available for Gen2 Systems. These are super important to improve connectivity between your controller and your kit, especially when using carbon boards. Additional pieces may be required to fill the entire length of the track.

SKU: 126

ASSIST
ASSIST PLUS
ASSIST MAX
ASSIST SLIM



Foil Drive 28v Standard Charger 4amp: 1x 28v Standard 4amp charger (No power lead)
Efficiently recharge your Foil Drive Assist Slim Endurance Battery using the 28v Standard Charger.

SKU: 126

ASSIST
ASSIST PLUS
ASSIST MAX
ASSIST SLIM



Foil Drive 40v Standard Charger 4amp: 1x 40v Standard 4amp charger (No power lead)
Charge your Gen2 Units efficiently with the 40v Standard Foil Drive Charger.

SKU: 127

ASSIST
ASSIST PLUS
ASSIST MAX
ASSIST SLIM



Foil Drive 40v Fast Charger 8amp: 1x 40v Fast Charger 8amp Charger (No power lead)
Recharge Gen2 Foil Drive Batteries in less time with the 40v FAST Foil Drive Charger 8A. With 8A of power output, this charger ensures a quick and efficient charge.

SKU: 128-X

ASSIST
ASSIST PLUS
ASSIST MAX
ASSIST SLIM



AC Power Lead: 1x AC Power Lead **SKU: 128-01** AU/Type I **SKU: 128-02** USA/Type A **SKU: 128-03** EU/Type C
Additional AC Power Leads for Gen2 Battery Chargers. While all kits come with the required AC Lead, these are available as additional or extras. Note: These are an adaptor lead only and can only be used with the Foil Drive Gen2 chargers.

SKU: 121

ASSIST
ASSIST PLUS
ASSIST MAX
ASSIST SLIM



Battery Grease: 1x 15g Tube of Dielectric Grease

Dielectric Battery Grease should be used on all connections (Battery and Motor Plug) before every use to ensure a reliable connection between unit and motor cable, protecting against corrosion, heat, and oxidation.

*Wholesale accounts please enquire about ordering in bulk.

SKU: 071

ASSIST
ASSIST PLUS
ASSIST MAX
ASSIST SLIM



Parallel Y Lead: 1x Parallel Y Lead

For use with 2x Small 4.2ah Batteries, Assist PLUS only! With this Y Lead you can take 2x Small 4.2ah Batteries, join them together in parallel and enjoy your Assist PLUS with a medium capacity. Important instructions and limitations on our website.

SKU: 029

ASSIST
ASSIST PLUS
ASSIST MAX
ASSIST SLIM



Battery Discharge Device: 1x Battery Discharge Device, 1x Discharge Adaptor Lead, 1x Manual

To ensure batteries remain at peak performance, we recommend storing between 40-60% charge. This device can automatically discharge your battery. Note: Also see **Replacement Discharge Adaptor Lead SKU 033**

SKU: 024

ASSIST
ASSIST PLUS
ASSIST MAX
ASSIST SLIM



Gen1 Lipo Bag: 1x Lipo Bag 245x400mm (9.6x15.7 inches)

Lipo Bags can be used for transport, charging and storage of your Gen1 Foil Drive Lithium Batteries. These bags are made of a fire retardant fibreglass, in the unlikely event your battery has an issue, it can help contain a fire or excessive heat.

SKU: 133

ASSIST
ASSIST PLUS
ASSIST MAX
ASSIST SLIM



Gen2 Lipo Bag: 1x Lipo Bag 430x100x50mm (9.6x15.7 inches)

Lipo Bags can be used for transport, charging and storage of your Gen2 Foil Drive Lithium Batteries. These bags are made of a fire retardant fibreglass, in the unlikely event your battery has an issue, it can help contain a fire or excessive heat.

SKU: 030

ASSIST
ASSIST PLUS
ASSIST MAX
ASSIST SLIM



Battery Checker: 1x Battery Checker - **SKU: 030-01** 22V **SKU: 030-2** 28V **SKU: 030-3** 40V

The Battery Checker is a simple, compact device to read your battery percentages. There are three available that are set to read different voltages, 22V, 28V, 40V. These are not cross compatible so you must ensure you have the correct Checker.

SKU: 066

ASSIST
ASSIST PLUS
ASSIST MAX
ASSIST SLIM



28v Battery Charger - Assist PLUS - AU/NZ Plug-Type I: 1x AUS Battery Charger with Adaptor for V1 or V2 Batteries

110-240v Lithium Battery Charger - This charger is for Assist PLUS Batteries ONLY. Chargers are available in both AU or a US plug type.

SKU: 067

ASSIST
ASSIST PLUS
ASSIST MAX
ASSIST SLIM



28v Battery Charger - Assist PLUS - US Plug-Type A: 1x US Battery Charger with Adaptor for V1 or V2 Batteries

110-240v Lithium Battery Charger - This charger is for Assist PLUS Batteries ONLY. Chargers are available in both AU or a US plug type.

SKU: 023

ASSIST
ASSIST PLUS
ASSIST MAX
ASSIST SLIM



22v Battery Charger - Assist: 1x Battery Charger - AU Plug Only

110-240v Lithium Battery Charger - This charger is for Assist Batteries ONLY. Chargers are only available AU plug type.

SKU: 032

ASSIST
ASSIST PLUS
ASSIST MAX
ASSIST SLIM



V2 Battery Adaptor Lead: 1x V2 Battery Charger Adaptor Lead

Specifically for customers with Gen1 V1 Batteries (2021- Mid 2023) where the plug on the battery is smaller than the plug on the updated chargers. V1 batteries must use this lead to charge with a newer version charger.

TOOLS

Foil Drive Kits are designed to be self servicable, this means that there are a range of tools and repair parts available. While we have an extensive online Help Centre with videos, written step by steps and troubleshooting, customers can also send their systems to a Foil Drive Service Centre as well. Simply email support@foildrive.com and describe the situation and we can go from there!

SKU: 036

ASSIST
ASSIST PLUS
ASSIST MAX
ASSIST SLIM



Motor Holder/Stand: 1x Motor Stand

Fit it to your workshop bench, or in your foiling van, to securely store your motor. It's also super handy for servicing your motor or when changing over hubs and propellers.

SKU: 076

ASSIST
ASSIST PLUS
ASSIST MAX
ASSIST SLIM



Motor Separation Jig: Jig Plate, 9mm Punch, 4x Mounting Screws, 2x Timber Screws

The perfect jig to remove the motor can from your motor without damaging the bearings. You can bolt your motor to the Jig Plate and attach the plate to a solid surface for better leverage. Use the punch to separate the parts then service your motor.

SKU: 080

ASSIST
ASSIST PLUS
ASSIST MAX
ASSIST SLIM



Circlip Pliers: 1x Plier Tool

Tool for removing circlips from older style Foil Drive Motors, removing this piece allows you to remove the Motor Can (Rotor) from the Stator.

SKU: 081

ASSIST
ASSIST PLUS
ASSIST MAX
ASSIST SLIM



Motor Servicing Kit: 1x Motor Stand, Speration Jig, 2x Motor Can Stickers, 3x Ceramic Bearings, 1x Bearing Press

Fit it to your workshop bench, or in your foiling van, to securely store your motor. It's also super handy for servicing your motor or when changing over hubs and propellers.

SKU: 122

ASSIST
ASSIST PLUS
ASSIST MAX
ASSIST SLIM



T40 Torx Driver 1x T40 Tee Handle Driver

T40 Torx Driver for Foil Drive.

SKU: 123

ASSIST
ASSIST PLUS
ASSIST MAX
ASSIST SLIM



T30 Torx Driver: 1x T30 Tee Handle Driver

T30 Torx Driver for Foil Drive.

SKU: 124

ASSIST
ASSIST PLUS
ASSIST MAX
ASSIST SLIM



Pick Tool: 1x Pick Tool

Included with every Gen2 Kit, use this tool to remove the O-Rings for cleaning or replacement.

SKU: 027

ASSIST
ASSIST PLUS
ASSIST MAX
ASSIST SLIM



2.5mm Hex Driver: 1x 2.5mm Hex Head Driver

Whilst every Foil Drive kit comes with a driver, we've all got tools that go missing! Grab a spare, or replace your olde driver that may have seen a little too much salt water. Top Tip: You can adjust the tightens of the head in the handle using the locator pin on the side of the handle.

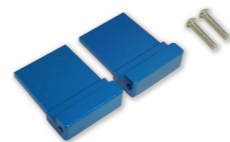
REPAIRS

All Foil Drive Systems have components that are self serviceable. All of them come supplied with detailed install information and videos.

If you require a service of your kit, contact your local dealer or email support@foildrive.com

SKU: 147-1

ASSIST
ASSIST PLUS
ASSIST MAX
ASSIST SLIM



Nose Cone Splints Assist MAX: 2x Assist MAX Nose Cone Splints, 2x M4 20mm Bolts

Replacement Nose Cone Splints for your Assist MAX.

SKU: 147-2

ASSIST
ASSIST PLUS
ASSIST MAX
ASSIST SLIM



Nose Cone Splints Assist Slim: 2x Assist Slim Nose Cone Splints, 2x M4 20mm Bolts

Replacement Nose Cone Splints for your Assist Slim.

SKU: 109-1

ASSIST
ASSIST PLUS
ASSIST MAX
ASSIST SLIM

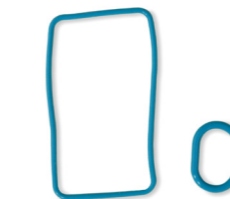


Latch Assembly Assist MAX: 2x Assist MAX Latch Assemblies, 2x M3x45mm Pivot Bolts, 2x M3x16mm Locking Bolts

Replacement Latches Assembly for Assist MAX.

SKU: 111-1

ASSIST
ASSIST PLUS
ASSIST MAX
ASSIST SLIM

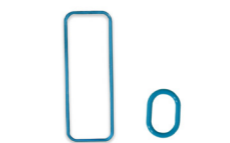


O-Ring Seals Assist MAX: 1x Assist MAX Nose Cone O-Ring, 1x Motor Plug O-Ring

Replacement O-Ring Seals for Assist MAX.

SKU: 111-2

ASSIST
ASSIST PLUS
ASSIST MAX
ASSIST SLIM



O-Ring Seals Assist Slim: 1x Assist Slim Nose Cone O-Ring, 1x Motor Plug O-Ring

Replacement O-Ring Seals for Assist Slim.

SKU: 048

ASSIST
ASSIST PLUS
ASSIST MAX
ASSIST SLIM



Controller Triggers: 1x Throttle Trigger, 1x Cruise Control Trigger, 1x Throttle Spring, 1x Cruise Spring

Replacement Triggers for Controller. These triggers are different sizes and have specific springs for each trigger. Instructions are provided.

SKU: 145-1

ASSIST
ASSIST PLUS
ASSIST MAX
ASSIST SLIM



Assist MAX Nose Cone A: 1x Nose Cone A

This is a replacement Nose Cone A for your Foil Drive Assist MAX system. Only compatible with Foil Drive Assist MAX.

SKU: 145-2

ASSIST
ASSIST PLUS
ASSIST MAX
ASSIST SLIM



Assist MAX Nose Cone B: 1x Nose Cone B

This is a replacement Nose Cone B for your Foil Drive Assist MAX system. Only compatible with Foil Drive Assist MAX.

SKU: 145-3

ASSIST
ASSIST PLUS
ASSIST MAX
ASSIST SLIM



Assist Slim Nose Cone C: 1x Nose Cone C

This is a replacement Nose Cone C for your Foil Drive Assist Slim system. Only compatible with Foil Drive Assist Slim.

SKU: 145-4

ASSIST
ASSIST PLUS
ASSIST MAX
ASSIST SLIM



Assist Slim Nose Cone D: 1x Nose Cone D

This is a replacement Nose Cone D for your Foil Drive Assist Slim system. Only compatible with Foil Drive Assist Slim.

SKU: 040

ASSIST
ASSIST PLUS
ASSIST MAX
ASSIST SLIM



Motor Can/Rotor: 1x Motor Can (Hub Not Included)

Replacement Motor Cans (Rotor) for Foil Drive.

SKU: 039

ASSIST
ASSIST PLUS
ASSIST MAX
ASSIST SLIM



Foil Drive Gen1 Motor 200cm - Assist & Assist PLUS: Motor, Puck, 200cm Cable, Gold Connector Pins Connected, Hub Not Included

Replacement Motor and Cable (200cm) for Foil Drive Gen 1, Assist and Assist PLUS. This is only available to existing customers if required for repairs.

SKU: 045

ASSIST
ASSIST PLUS
ASSIST MAX
ASSIST SLIM



Motor Protection Sticker: 1x Sticker

The sticker acts as an outer protection for the paint on the motor. If your sticker becomes torn or ripped, it is recommended you replace it to help protect your motor.

SKU: 041-X

ASSIST
ASSIST PLUS
ASSIST MAX
ASSIST SLIM



Gen1 Cover & Battery Monitor: 1x Internal Cover and Battery Monitor, 1x Power Cable - SKU: 041-1 Assist SKU: 041-2 Assist PLUS

Replacement electronics cover for Foil Drive Assist or Assist PLUS. Comes with battery monitor screen and pig tail lead ready to be plugged in. Please be aware of the antenna, screen power lead and main power lead when removing and installing covers.

SKU: 047

ASSIST
ASSIST PLUS
ASSIST MAX
ASSIST SLIM



Cable Gland: 2x Internal Rubber Parts, 1x Outer Stainless Steel Collar, 1x Internal Stainless Steel Ring, 1x Internal Stainless Steel Thread

Replacement or Spare Stainless Steel Cable Gland For Foil Drive Assist or Assist PLUS.

SKU: 046

ASSIST
ASSIST PLUS
ASSIST MAX
ASSIST SLIM



Box Latch Protectors: 2x Latch Protectors, 2x M3 30mm Bolts

V2 Latch Protectors for your Foil Drive Assist and Assist PLUS, with an improved locking mechanism for fail-safe protection.

SKU: 049

ASSIST
ASSIST PLUS
ASSIST MAX
ASSIST SLIM



Electronics Box Lid: 1x PC Lid, 2x Latches (Attached)

Replacement Polycarbonate Clear Lid with Latches for the Assist and Assist PLUS.

SKU: 050

ASSIST
ASSIST PLUS
ASSIST MAX
ASSIST SLIM



Replacement Box Latches: 2x Replacement Latches

Pair of Replacement Latches for Assist and Assist PLUS Electronics Boxes, also see available Electronics Box Lid.

SKU: 017

ASSIST
ASSIST PLUS
ASSIST MAX
ASSIST SLIM



Motor Puck: 1x Motor Puck, 4x Motor to Puck - M4 10mm, 18mm Heat Shrink, 3x 8mm Heat Shrink

Replacement Motor Puck for Foil Drive Motors, installation hardware and instructions included.

SKU: 051

ASSIST
ASSIST PLUS
ASSIST MAX
ASSIST SLIM



Cable Repair/Extension Kit: 120cm Cable, Dual Wall Glued Heat Shrink - 6x 8mm, 3x 6mm, 1x 12mm

High Strand Cable and heat shrink kit for repairing/extending motor cable. Contact support@foildrive.com before ordering to confirm.

SKU: 052

ASSIST
ASSIST PLUS
ASSIST MAX
ASSIST SLIM

V1 Battery Connector Kit:

Replacement Large Black Plug & Smaller Yellow Plugs for V1 Batteries.

SKU: 053

ASSIST
ASSIST PLUS
ASSIST MAX
ASSIST SLIM

V2 Battery Connector Kit:

Replacement Large Yellow 4 Pin Plug for V2 Batteries.

SKU: 044

ASSIST
ASSIST PLUS
ASSIST MAX
ASSIST SLIM

Dual Wall Glue Heatshrink Kit:

While most of our replacement kits come with heatshrink where needed, you may like to add some extras to your cart just in case!

SKU: 054

ASSIST
ASSIST PLUS
ASSIST MAX
ASSIST SLIM

Electronics Box Connector Kit:

Replacement Large Black Plug for Assist or Assist PLUS Electronics Box. Replacement electronics box plugs for the battery monitor and main power lead.

SKU: 055

ASSIST
ASSIST PLUS
ASSIST MAX
ASSIST SLIM

V1 Charger Connector Kit:

Replacement Small Yellow Plug for Chargers.



Image: Shannon Stent

STORAGE



SKU: 129

Foil Drive Gen2 Carry Case

Keep your Gen2 Foil Drive safe and secure in this sleek, protective Carry Case. It's durable construction helps shield your Foil Drive from damage while in transit or while in storage. No parts Included, case only.

690mm x 430mm x 110mm

COMING
SOON

SKU: 132

Foil Drive Gen2 Ultimate Carry Case

Carry everything for your Gen2 Foil Drive safely in the Foil Drive Ultimate Carry Case. Keep your Gen2 Foil Drive, your mast and all its components protected in this secure and reliable design.

Prorotype 910mm x 255mm x 275mm





SKU: 131

Foil Drive Mast Soft Cover

Soft cover to keep your mast safe in storage and transport. This mast is suitable for masts up to 19mm wide.



SKU: 130

Foil Drive Gen2 Motor Carry Case

The Foil Drive Gen2 Motor Carry Case is designed to give you maximum protection for your motor during storage and transport.

245mm x 215mm x 115mm



SKU: 061

Foil Drive Slim Stubby Cooler

The Foil Drive Stubby Cooler fits over your motor can and propellers for protection in transit, or to keep a beer cold!



Image: Shannon Stent

FOIL DRIVE GEN2 APP

The brand new Foil Drive app has been created to get even more out of your Gen2 Foil Drive unit.

Using a wireless Bluetooth chip in the Units, you can now fine tune your Foil Drive ride experience adjusting settings such as:

Power Modes

Learn, Low, Medium and High Power modes let you adjust the maximum thrust output of your system.

Boost Modes

Allows you to program up to 20% additional boost thrust to help you get out of the water faster on small foils and boards or for heavier riders

Latency Adjustment (Advanced Setting)

Adjustment of the delay time between the controller losing wireless signal and the motor cutting out.

The app is super important for configuring your Assist Slim unit when using 2 different voltage batteries. The Assist Slim needs to be programmed to use either the 40v Slim Performance battery or the 28v Slim Endurance battery before use, or you risk permanent damage to your battery.

This is just the beginning for the Foil Drive App, we have developments in the works for more user information and helpful tips and tricks to be integrated into the app as well as system feature updates and eventually a community section for GPS based activities and features.

Available on Android and IOS devices up to 2 years old. Requires Android 12 and above or iOS11 and above.



MERCHANDISE



SKU: 091-X

Foil Drive Icon Wash Shirt

Cotton T-Shirts by AS Colour ranging in sizes S-XL. Regular Fit - Crew Neck - Light Weight 140 GSM.



SKU: 060-X

Foil Drive Stone Wash Shirt - Black

Cotton T-Shirts by AS Colour ranging in sizes S-XL. Regular Fit - Crew Neck - Light Weight 140 GSM



SKU: 065-X

Foil Drive Hoodie

80% Cotton AS Colour Hoodies ranging in sizes S-XL. Regular Fit - Longline - Heavy Weight 350 GSM.



SKU: 063

Foil Drive Cap

Foil Drive Trucker's Cap for those long summer days out flying, tried and tested to stay on in the water!



SKU: 062

Foil Drive Bumper Sticker (3 Pack)

High tack gloss vinyl sticker to represent Foil Drive on your board, car, laptop... Wherever it'll stick!

Dimensions: 20cm x 3cm



F»**FOIL DRIVE**



View online at:
www.foildrive.com in the footer of
our website or scan the QR Code